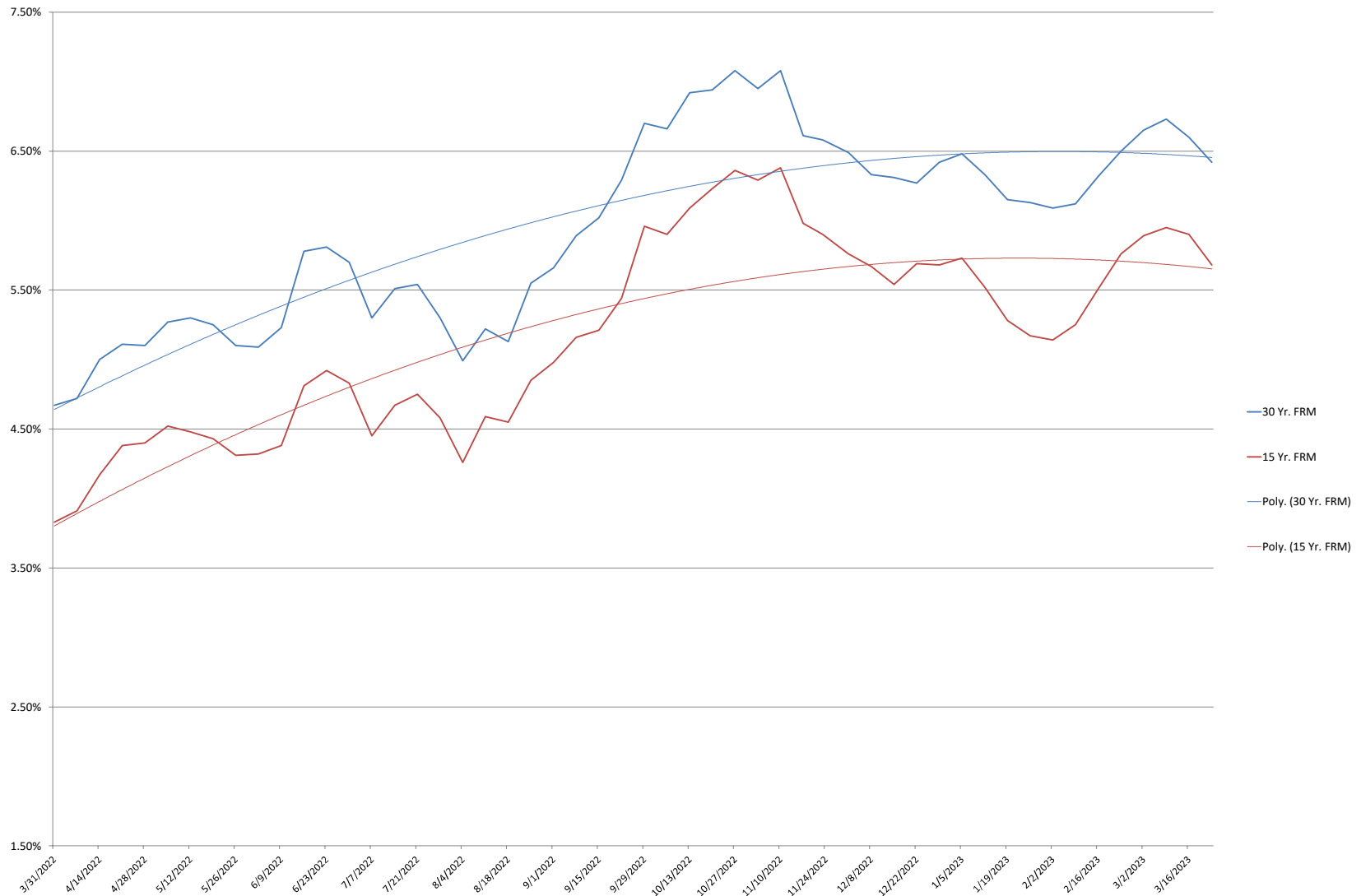


Freddie Mac Rates -- Mortgage Rate Survey Data 52 Weeks Ending March 23, 2023



Single-family mortgage rates rose steadily throughout 2022, but have softened and stabilized recently. A year ago the FHLMC 30-year fixed rate was 4.67%. Over the past 52 weeks, the rate hit a low of 4.67% and a high of 7.08% with an average of 5.95%. It was 6.42% as of March 23, 2023. Even with relatively low mortgage rates home sales have been limited by a small inventory of property for sale and stringent credit requirements for borrowers. Source: http://www.freddiemac.com/pmms/pmms_archives.html - Compiled by Joe Napoliello, MAI