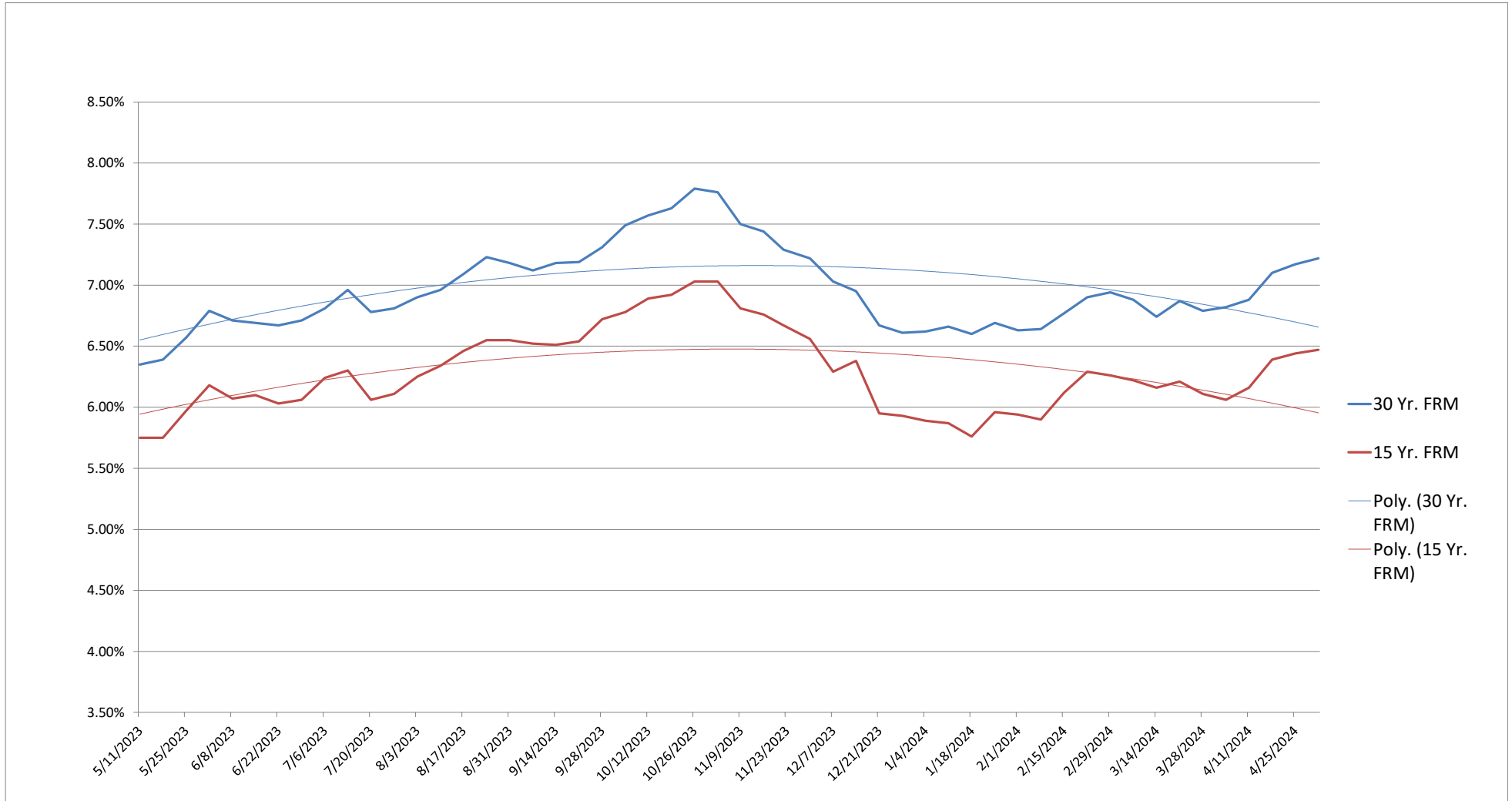


Freddie Mac Rates -- Mortgage Rate Survey Data -- 52 Weeks Ending -- May 02, 2024



Single-family mortgage rates rose steadily throughout 2022, and have dropped slightly from the upper end of the price range recently. A year ago the FHLMC 30-year fixed rate was 6.35%. Over the past 52 weeks, the rate hit a low of 6.35% and a high of 7.79% with an average of 6.97%. It was 7.22% as of May 2, 2024. Higher mortgage rates and limited inventory of property for sale along with stringent credit requirements for borrowers have slowed home sales. The FHLMC 30-year fixed rate mortgage survey data on-line goes back to April 1971. Over the 53+ year span, the average residential interest rate was 7.73%. It hit a low of 2.65% in January 2021 and a high of 18.63% in October 1981. Source: http://www.freddiemac.com/pmms/pmms_archives.html - Compiled by Joe Napoliello, MAI